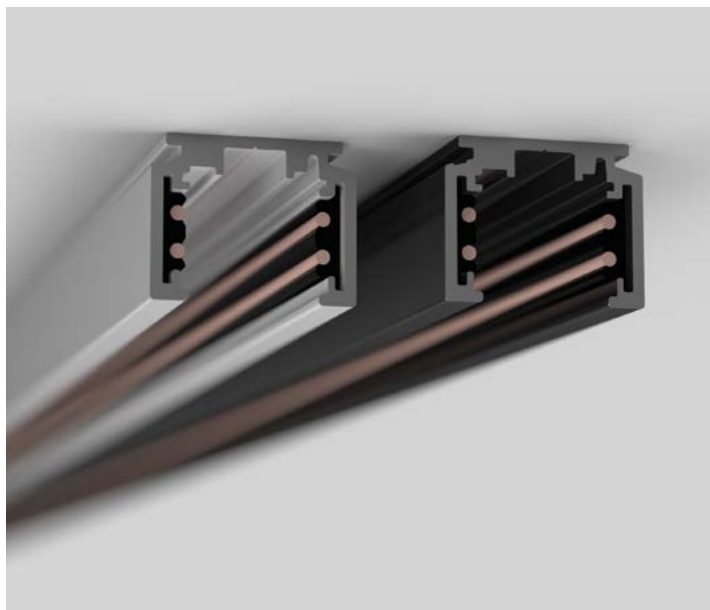


TRACK 48Vdc O1 PLAFONE O PARETE - WALL OR CEILING

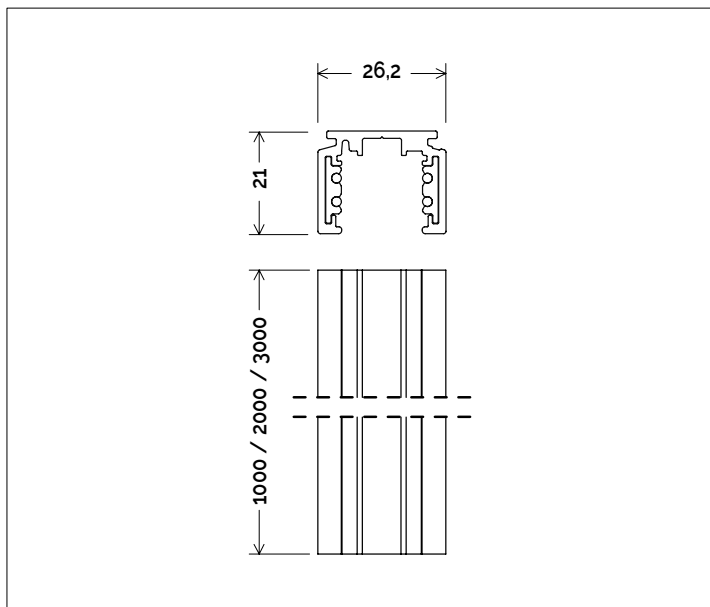
9L001,9L002,9L003



Descrizione del prodotto / Product description

Binario elettrificato a bassa tensione per installazione a plafone o parete.
Realizzato in alluminio estruso.
Conduttori interni isolati in rame.
Corpo verniciato a polveri epossidiche con un'ampia versatilità d'uso grazie alla vasta offerta di accessori dedicati.

*Low voltage electrified track for ceiling or wall installation.
External body made of extruded aluminium.
Copper internal conductors.
Body painted with epoxy powders with a wide versatility thanks to the wide range of dedicated accessories.*



Dati tecnici | Technical Info

* su richiesta / on requests

Finiture Finishes	<ul style="list-style-type: none"> ○ 4001 Bianco White ● 4002 Nero Black ● Verniciati RAL RAL Paintings*
Lunghezza Length	<ul style="list-style-type: none"> 9L001 1m 9L002 2m 9L003 3m
Corrente Current	15A
Tensione Voltage	24 ~ 48Vdc
Temperature di esercizio Operating temperature	-20° ~ 45°

Simbologia tecnica
Technical informations

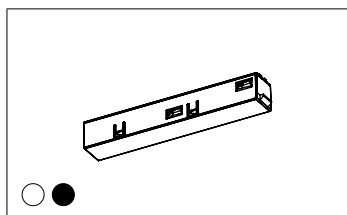
	Conforme alle direttive CE
	Conforme alle normative RoHS
	Rifuto RAEE
	Classe III
IP20	Indice di Protezione IP20

Sistemi di Controllo
Control System

	On / Off (remoto escluso / remote excluded)
	DALI * (remoto escluso / remote excluded)
	Casambi Bluetooth * (remoto escluso / remote excluded)

Accessori | Accessories

9L101

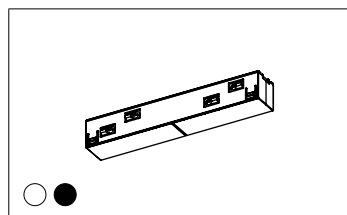


Testata di alimentazione
(110x17x17mm).

Colore bianco o nero.

*Power Head (110x17x17mm).
Color white or black.*

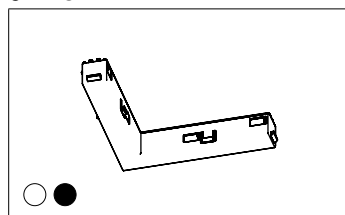
9L102



Giunto diretto (110x17x17mm).
Colore bianco o nero.

*Direct Joint (110x17x17mm).
Color white or black color.*

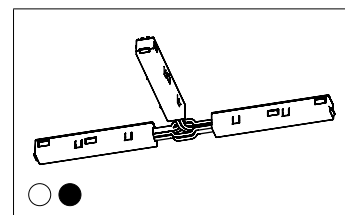
9L103



Giunto Angolare
(110x110x17mm).
Colore bianco o nero.

Color white or black.

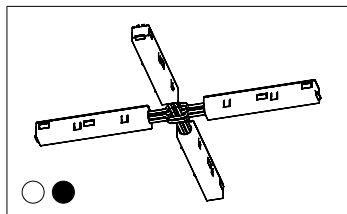
9L104



Giunto a T (278x147x18mm).
Colore bianco o nero.

*T Joint (278x147x18mm).
Color white or black color.*

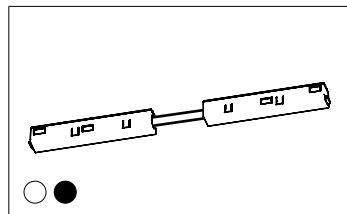
9L105



Giunto a X (278x278x18mm).
Colore bianco o nero.

*X Joint (278x278x18mm).
Color white or black color.*

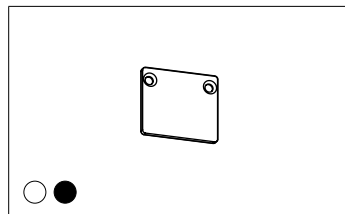
9L106



Giunto flessibile (270x17x17mm).
Colore bianco o nero.

*Flexible Joint (270x17x17mm).
Color white or black color.*

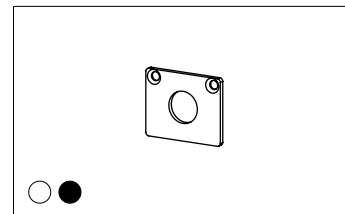
9L107



Tappi di chiusura (27x21mm).
Colore bianco o nero.

*End cap (27x21mm).
Color white or black.*

9L108



Tappi di chiusura con foro
(27x21mm).
Colore bianco o nero.

*Dead end with hole (27x21mm).
Color white or black.*

Codici Ordine | Order Code

finitura / finishes	lunghezza / lenght	codice / code
○ 4001 Verniciato Bianco White painted	1m	9L001-XXXX
● 4002 Verniciato Nero Black painted	2m	9L002-XXXX
	3m	9L003-XXXX